

## **RELY ON FFI**

**Innovation  
Quality Products  
Technical Expertise  
Dependability**



# ABOUT FFI

Functional Fenestration Inc (FFI) provides architectural hardware and component solutions to the fenestration (door and window) industry. Key strengths include solutions for large sliding doors, swinging doors, and all types of operable windows. Since 1987, our continuing vision is to serve as experts and innovative industry leaders, committed to superior quality in products, service, and reliability.

## FFI SERVES

### OUR CLIENTS

FFI clients include manufacturers and resellers of windows & doors. Our solutions are well-diversified for millworks, manufacturers, glazing contractors and metal fabricators, window & door dealers and resellers, hardware stores, decorative hardware showrooms, and hospitality contractors.

### THE DESIGN COMMUNITY

FFI also works with architects, specifiers, interior designers, developers, and builders. We provide CAD drawings, solutions for application challenges, and support for projects in the design phase.



## PRODUCT APPLICATIONS

FFI window & door systems provide innovative functionality, natural ventilation, daylighting and views for:

### COMMERCIAL PROJECTS

- Hotels
- Multi-Family
- Restaurants
- Offices

### RESIDENTIAL PROJECTS

- Patios
- Kitchens
- Bedrooms
- Baths & Spas



# TODAY'S FFI: 3 AREAS OF EMPHASIS

## 1. FFI DESIGNED PRODUCTS

- Created by FFI Product Development team; only available from FFI
- Examples: FFI SST Lift Slide, Cascade handle, FASTrack, Anti-Derailer lock

## 2. WHOLESALE DISTRIBUTION

- In partnership with select top global manufacturers
- Partners include AGB, VBH(GB), Weider and Winkhaus

## 3. OEM HARDWARE & COMPONENTS

- Designed and produced to customer specifications
- Exclusivity and private label logo placement available

## WHY FFI?

### INNOVATION

- Product offerings are continually enhanced
- FFI Designed Products are inspired by market feedback & requests

### QUALITY PRODUCTS

- Only products with the highest quality materials and features
- Products are assessed with the installer and end-user experience in mind

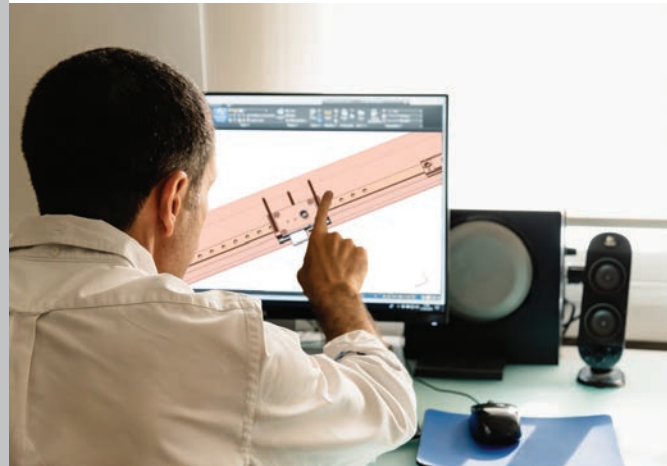
### TECHNICAL EXPERTISE

- The FFI team delivers responsive, detailed, and accurate help
- CAD files, BOM product calculators, marketing support & more

### DEPENDABILITY

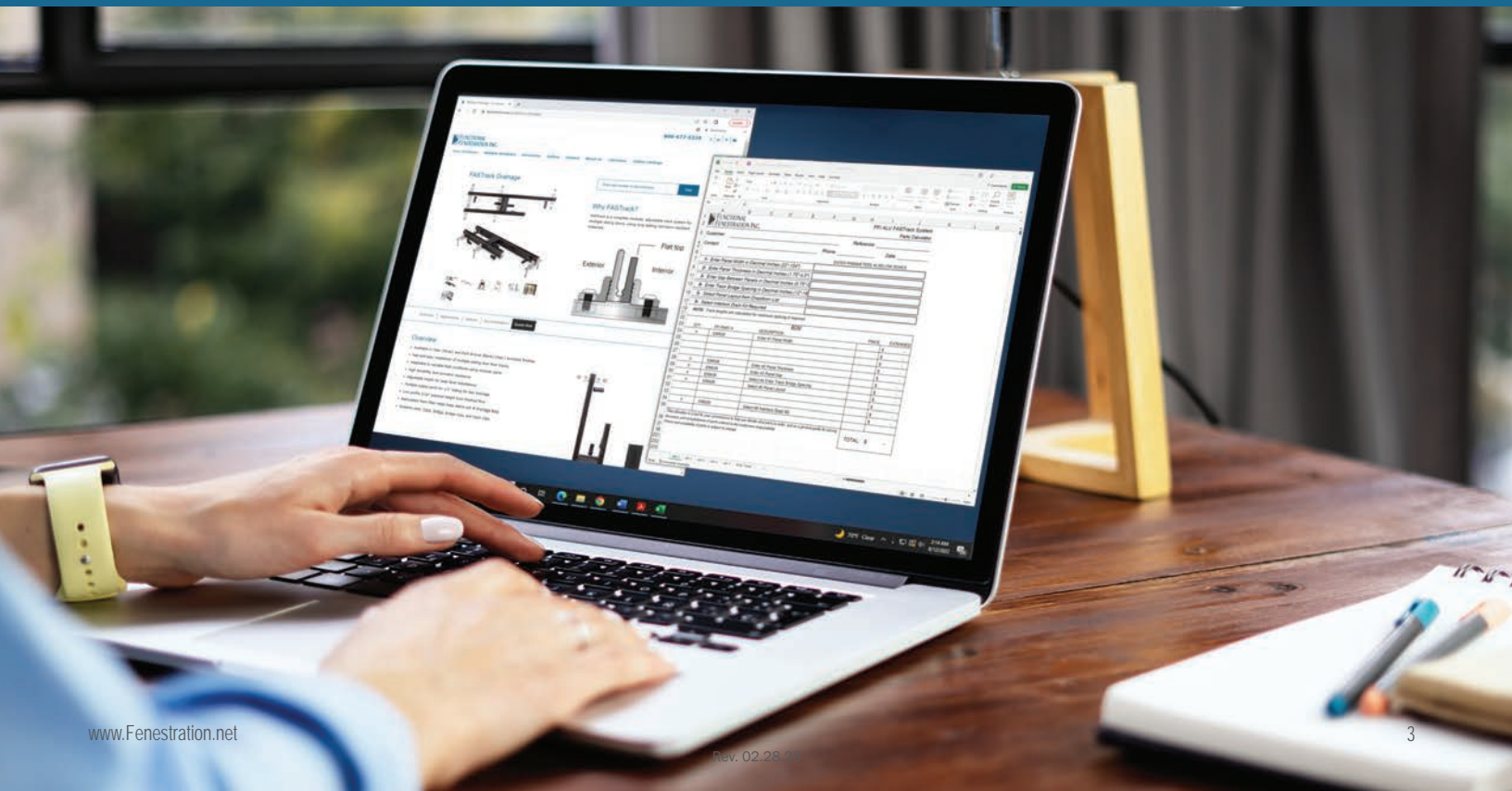
- FFI solutions are delivered within our commitment to transparency & ethics
- In-stock inventory is proactively planned to meet your needs

**OEM SERVICES  
WITH CREATIVE SOLUTIONS  
TO MEET YOUR NEEDS**



## RELY ON FFI

FFI's management team has 100+ years fenestration industry experience.  
We're here for you, because FFI believes our success is based on your success.  
[www.Fenestration.net](http://www.Fenestration.net)



Extension

FFI Lift  
Slide Gear

Lock Bolt

Panel Interlock

## FFI Lift Slide Systems

High Performance System for Sliding Doors  
For all sash types including Wood, Clad, Steel,  
Aluminum, Composite and PVC.

- Premium 304 or economical 430 grade stainless steel gears and rollers
- Rated to 880 lbs. per door panel
- Salt spray tested to 3,000 hours corrosion resistance
- Gears accommodate up to 8'8" panels
- Panels heights up to 14ft tall
- Stocked in USA for just-in-time delivery
- 15 Year warranty
- Secure attachments (no set screws)

Edge Pull  
Integrated and warrantied

Cascade Flush Handle



HD Assist  
(Heavy Door)

Anti-Derailer Lock  
Recommended for  
hurricane testing

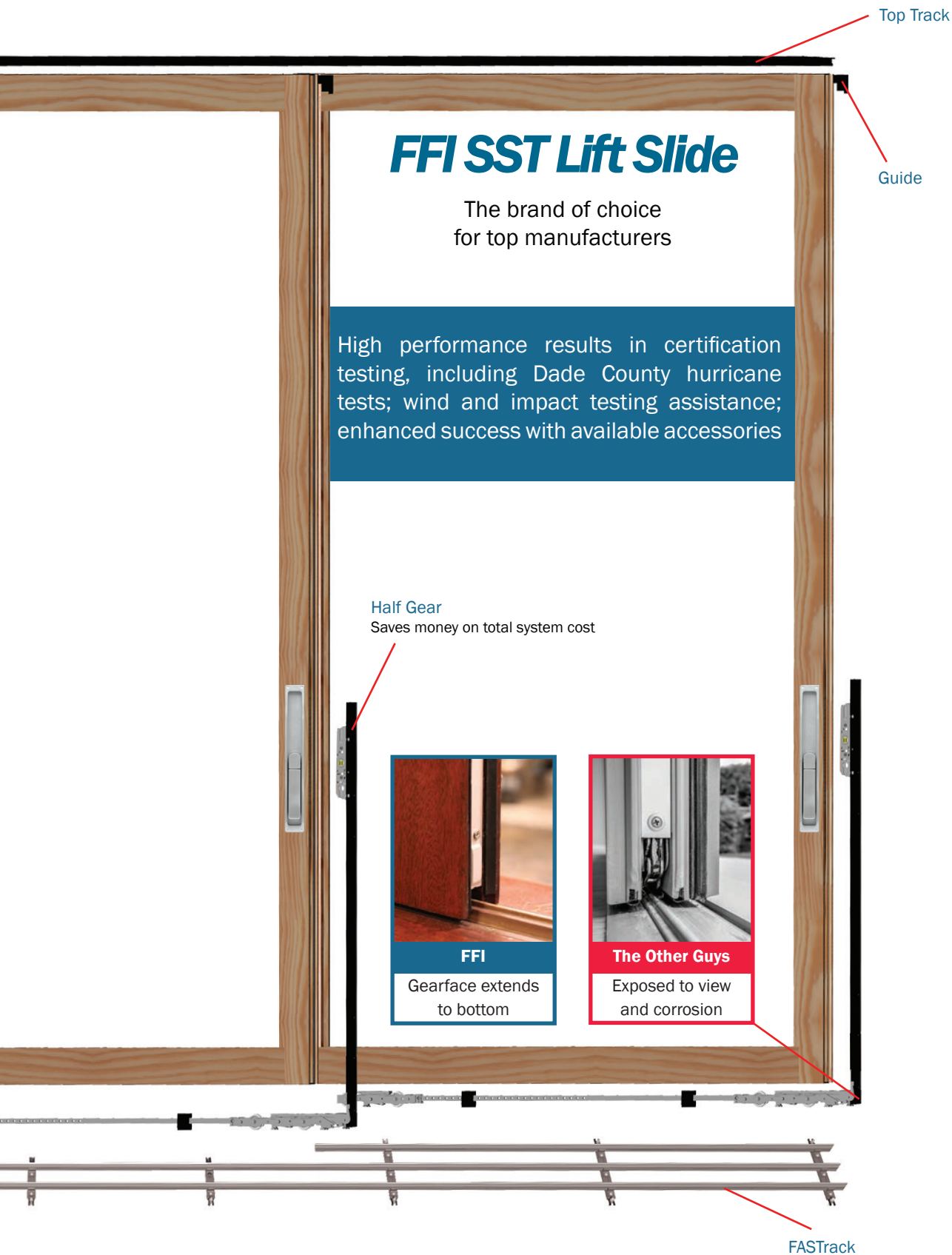


Link Rod

Adjustable Rear Carriage

Interlock Drainage Kit

Welded Corner Gasket  
Weather seal



# TRACK SYSTEMS FOR SLIDING DOORS

## FFI FASTRACK SIGNATURE SYSTEMS

FASTrack is a low-profile floor track system for single or multi-panel sliding doors.

- Corrosion-resistant systems: stainless steel & brass or Class I anodized aluminum
- Fast and easy installation of multiple sliding door floor tracks
- Adapts to variable field conditions using modular parts
- Adjustable track spacing & height for laser level installations
- Can pass wind and impact tests using FFI Anti-Derailer Lock

### Available Finishes

- Clear Anodized Aluminum
- Stainless Steel



Anti-Derailer Lock



## FFI FASTRACK DRAINAGE SYSTEM

FASTrack Drainage is a low-profile floor track system for single or multi-panel sliding doors, with flexible solutions to water diversion from door openings.

- In corrosion-resistant Class I anodized aluminum
- Fast and easy installation of multiple sliding door floor tracks
- Adjustable track spacing & height for laser level installations
- Can pass wind and impact tests using FFI Anti-Derailer Lock

### Available Finishes

- Dark Bronze Aluminum
- Clear Anodized Aluminum

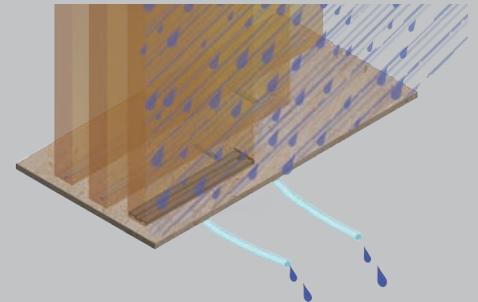
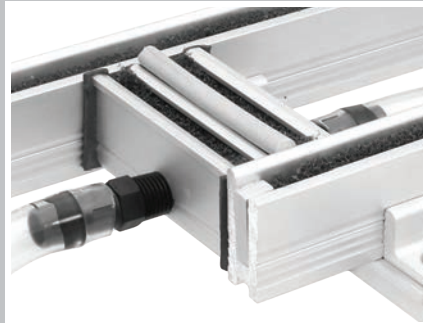


## FFI INTERLOCK DRAINAGE KIT

The Interlock Drainage Kit is a flexible solution to water diversion from single or multi-panel door openings. It provides both interior and exterior drainage.

### Available Finishes

- Dark Bronze Aluminum
- Clear Anodized Aluminum



## WINKHAUS SLIDER DOOR LOCKS AND HANDLES

FFI exclusively offers Winkhaus hardware in North America; this lock and handle system features high quality materials and function.

- For 1¾" (45mm) or 2¼" (57mm) thick doors
- Stainless steel components include face-plate, hooks and strikes
- Spring-loaded double hooks automatically latch behind strike plate



Miami Handle shown  
in PVD Satin Nickel



Winkhaus Slider Lock

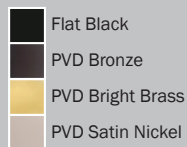
## DOOR HANDLES FOR WINKHAUS SLIDER LOCK

High quality decorative door handle trim sets for Winkhaus Slider Lock.



Miami

### Available Finishes

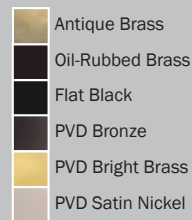


Botticelli



Fontana

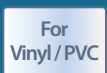
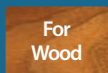
### Available Finishes



## TOUCH® MAGNETIC CATCH FOR INTERIOR DOORS & SCREENS

Patented contactless adjustable magnetic door catch.  
Minimal design with no visible screws.

- Catching force is adjustable to meet almost all applications
- Minimal design with no visible screws
- Adjustable magnets retract when door is opened

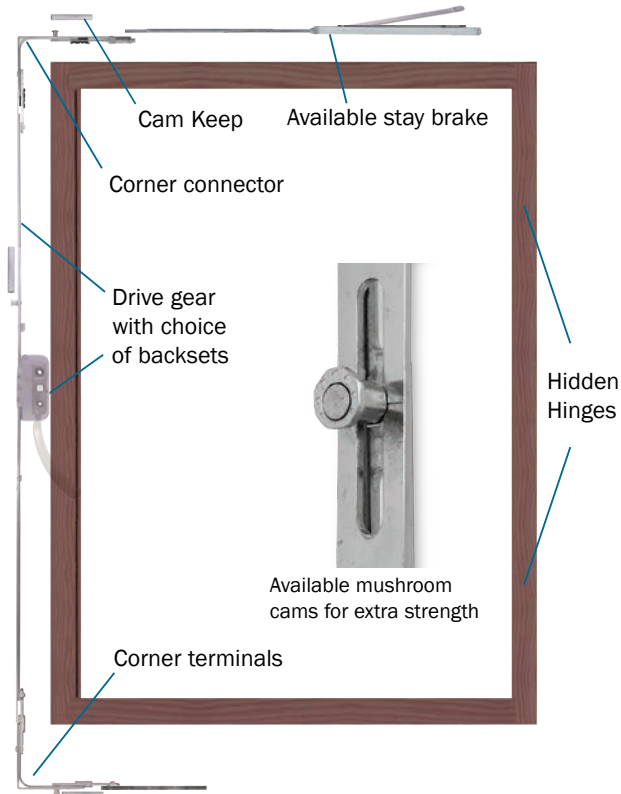


Touch Magnetic Catch



# MULTIPOINT WINDOW HARDWARE

- For in-swing or out-swing windows
- Function - one handle activates multiple lock points



FFI DISTRIBUTES THESE QUALITY WINDOW HARDWARE BRANDS IN NORTH AMERICA



## AGB Artech Window Hardware

- Activage coastal finish with 2,000 hour+ salt spray resistance
- Made in Italy with quality cold-forged steel
- Backsets: 15, 25, 30, 35, 40, 45, 50mm
- Modular drive rod and gear assemblies for flexible inventory



## VBH(GB) Window Hardware

- Backsets: 20 and 22mm
- Simple Inline Espagnolettes
- Securitas security window multipoints
- Invicta shootbolt locks
- 10 year greenteQ warranty



## Winkhaus Window Hardware

- Suitable for narrow frames
- Made in Germany
- Backsets: 15.5, 25, 30mm

# TILT TURN WINDOW HARDWARE

Tilt turn is ideal for large openings, secure alignment, warp-prevention and hurricane testing. Applications for tilt turn with tilt-in hopper function and turn-in casement function include in-swing single or double (French) windows, and concealed-hinge tilt turn windows are suitable for historic building renovations.

- High strength & security from multipoint locking on all four sides
- Supports large dual & triple-glazed windows with up to 2" glazing
- Helps meet LEED goals for daylighting and natural ventilation



## AGB ARTECH PLANA

- Activage coastal finish with 2,000 hour+ salt spray resistance
- Backsets: 15, 25, 30, 35, 40, 45, 50mm
- Sash weights up to 330 lbs (150 kg)

## POSEIDON HOOK LOCKING SYSTEM

Optional hook extensions and keeps for ARTEch Tilt Turn and Multipoint windows.

Lifting the lever activates all lock points simultaneously.

Steel material, Activeage finish with Corrosion Resistance to 2,000 hours.

Any AGB window gear is compatible with this optional extension and keep.



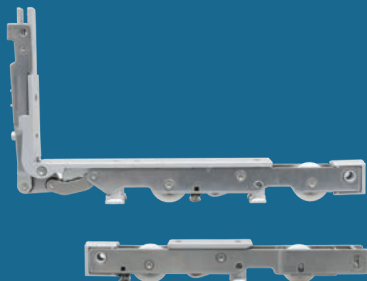
## WINKHAUS ACTIVPILOT TOPSTAR

- Suitable for narrow frames
- Backsets: 15.5, 25, 30mm
- Sash weights up to 286 lbs (130 kg)
- Economical options available



# FFI LIFT SLIDE WINDOW SYSTEMS

- Larger openings, minimal sight lines, fewer panels, and more glass
- Cleverly scaled down (slimmer carriages, gears, backset and handles) to allow narrower frames & bigger views
- Allows skinny 1-3/4" panels; 10mm shorter bottom rail
- Same quality, materials, and warranty as FFI SST Signature Lift Slide – at lower cost
- For windows: provides the same view as a door while avoiding door sill weatherability issues
- Achieve a higher performance window with natural ventilation
- Choice of premium 304 or economical 430 grade stainless steel

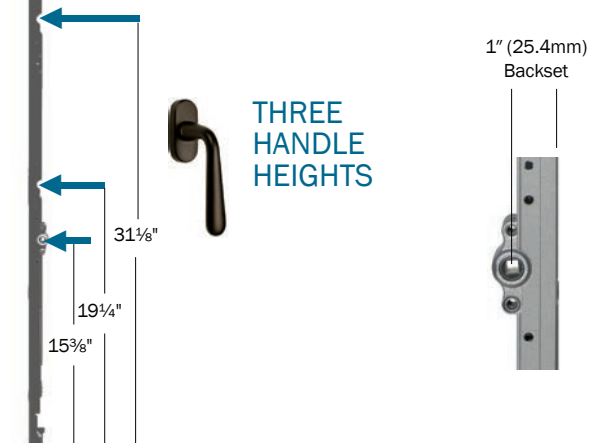


Low profile carriages



## FFI ULTRAVUE MODEL 170DL

- Cleverly scaled down for slim profiles on high performance windows
- 7mm spindle hub
- 3 adjustable handle heights; 15 3/8", 19 1/4" & 31 1/8" (from bottom of gear)
- 1" (25.4mm) backset
- For panel thicknesses 1 3/4" (45mm), 2 1/4" (56mm), 2 3/4" (68mm) or thicker
- 4 locking points (more with extensions)
- Weight capacity 330 lbs (150 kg) at 100,000 cycles; 440 lbs (200 kg) at 25,000 cycles



THREE  
HANDLE  
HEIGHTS

1" (25.4mm)  
Backset

## FFI SIGNATURE MODEL 170SH

- 10mm spindle hub
- 1 handle height: 15 1/4" (from bottom of gear)
- 1 1/2" (37.5mm) backset
- For panel thicknesses 2 1/4" (56mm), 2 3/4" (68mm) or thicker
- 3 locking points (more with extensions)
- Weight capacity 440 lbs. (200 kg) at 100,000 cycles; 990 lbs (450 kg) with tandem carriage kit at 25,000 cycles



ONE  
HANDLE  
HEIGHT

1 1/2" (37.5mm)  
Backset

# MULTIPOINT DOOR LOCKING SYSTEMS

Multipoints are modular and can be configured in many ways, depending on desired height of door, handle height, and if cams are wanted.



## UNITOP & UNITOP POSEIDON

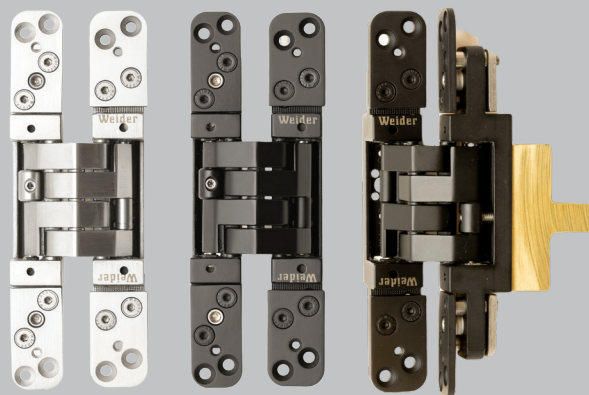
- Lever-driven locks, for patio and balcony doors, activated by lifting door lever to engage the lock points.
- For standard door heights (80", 96") and up to 12 foot tall doors.
- Spindle center distance is 92mm; accepts 8mm spindle.
- Backsets from 25 to 55mm.

## SICURTOP & SICURTOP POSEIDON

- Gear-driven shootbolt locks for single doors, entry or commercial, activated by turning a cylinder (not by lifting a lever as with Unitop).
- Spindle center distance is 85mm or 92mm; accepts 8mm spindle.
- Backsets from 35 to 80mm

# CONCEALED HINGES IN STAINLESS STEEL

- by Weider Metal, for flush and rebated doors
- Two versions: For doors up to 120kg (264lbs) and 160kg (352lbs)
- For wood, steel, aluminum & glass doors
- 3D adjustability
- Hold-open & Self-Closing function options can be used on the same door
- Many finish options
- UL in process



# BI-FOLD DOOR SYSTEMS

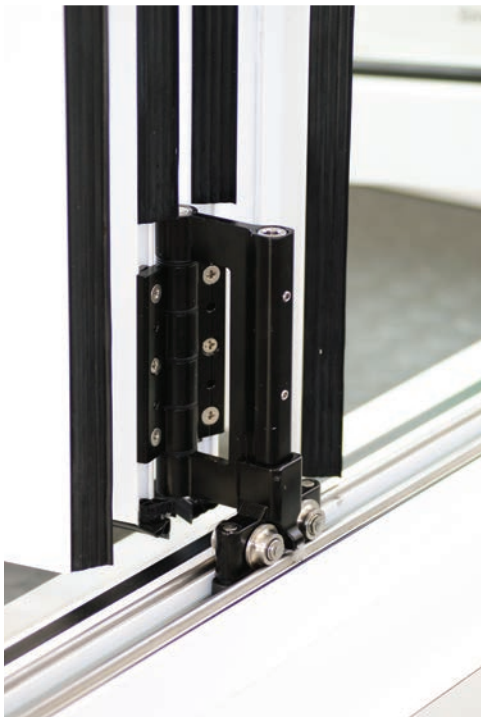
## GREENTEQ CLEARSPAN FOR ALUMINUM DOORS

FFI is the exclusive North American distributor for greenteQ hardware by VBH (GB) Ltd, known for quality and choice guaranteed, at sensible prices. VBH(GB) offerings include patio door hardware for bi-fold doors, lift-slide and other sliding doors, as well as window hardware and decorative handles.

Compatible Profiles	Visifold 1000, Reynaers CF 68 & others
System Materials	Aluminum, zinc, and steel
Capacity	120kg sash weight
Warranty	10 year warranty

### CLEARSPAN CHARACTERISTICS

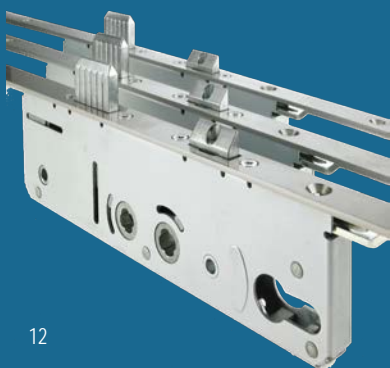
- Smooth operation
- Unobtrusive slimline hardware
- Bottom roller system
- Locking options
- Corrosion tested
- Cycle tested for air, wind and water
- 5mm vertical adjustment



# GREENTEQ Q-BOLT MULTIPOINT DOOR LOCKS

## GREENTEQ CLEARSPAN FOR ALUMINUM DOORS

Compatibility	All sash types (PVCu, aluminum, wood)
Layouts	For single or double doors
Applications	For swinging doors
Materials	Silver passivated mild steel
Deadbolt	25mm (one inch)
Backsets	35mm and 45mm
Faceplate	16mm or 20mm
Lock points	Two chamfered security hooks
Performance	Tested to 50,000 cycles
Warranty	10 year greenteQ warranty



# BARN DOOR HARDWARE FFI TOP FLIGHT

## IN MARINE-GRADE STAINLESS STEEL SST SERIES TOP HUNG SYSTEMS

- Marine-Grade Stainless Steel
- Highly durable and quiet Delrin wheels
- Self-cleaning tracks
- Soft close option available
- Suitable for extreme environments



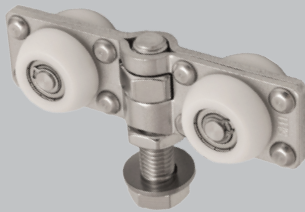
T300 Track



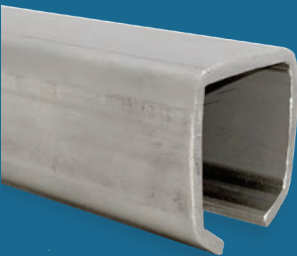
Light Duty Carriages



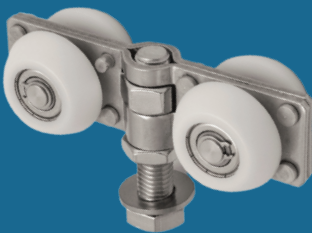
T400 Track



Medium Duty Carriages



T480 Track



Heavy Duty Carriages



## APPLICATIONS

### **Residential, condominiums, hotels & resorts:**

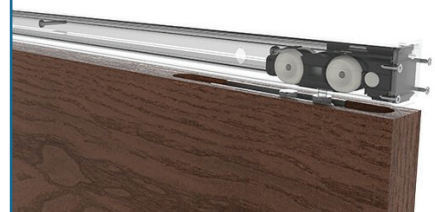
Barn doors, pocket doors, exterior storm shutters, interior room dividers, screens, and more.



### **Commercial, institutional & industrial:**

Corrosive and coastal environments, marinas, yachts, animal enclosures, server windows, factories, and more.

**ALUMINUM TRACK SYSTEMS  
ALSO AVAILABLE, SEE CATALOG C**



# LIFT SLIDE HANDLE SETS



- Available Finishes
- Satin Stainless PVD
  - Satin Brass
  - Espresso

**CASCADE**



**WINDOW HANDLE**

## FFI LS600 SERIES HANDLES

Solid brass handles & plates; stainless steel 10mm spindles.  
Options: Removable, cylinders, double handles.



**MODERA**

**CLASSIC**

**SIERRA**



Pulls available in many styles, finishes and sizes

# SWING DOOR HANDLE SETS



**SUMMER**

**CREST**

**TOKYO**

**SUNRISE**

## Eurostyle Cylinders



Many styles and finishes available. See full catalog for details.

# DK WINDOW HANDLE SETS

DK handles are for window locks with 7mm square spindle hubs, used in tilt turn gears and multipoint gears (recommended for positive stop action). Features integral spring-assist mechanism, most models available with locking option.



**KENT**



**YORK**



**DEVON**



**DORSET**

## Available Finishes

- Polished Lacquered
- Antique Brass Unlacquered
- Polished Nickel
- Satin Nickel
- Dark Bronze Unlacquered
- Black Bronze Unlacquered
- Polished Unlacquered



**SECURA**

## Available Finishes

- Silver



**GOLIA**

## Available Finishes

- Oil-Rubbed Brass
- Matte Chrome
- Bright Chrome



**OTTAWA**

## Available Finishes

- Brushed Stainless Steel



**FLUSH HANDLE**

## Available Finishes

- Light Bronze
- Silver
- White

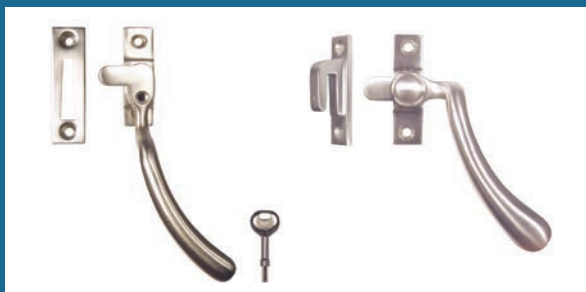


**ALPHA**

## Available Finishes

- White
- Black
- Anthracite Grey
- Polished Chrome
- Satin Chrome
- PVD Gold
- Enduro Steel
- PVD Smokey Chrome

# CAM HANDLES FOR CASEMENT WINDOWS



## Available Finishes

- Polished Lacquered
- Antique Brass Unlacquered
- Polished Nickel
- Satin Nickel
- Dark Bronze Unlacquered
- Black Bronze Unlacquered
- Polished Unlacquered

# FFI HISTORY HIGHLIGHTS

1987	Seeing a market need through experience as a contractor and in window & door manufacturing & sales, Robert Renner founds a wholesale hardware distribution company and becomes the Western States Distributor for Truth Hardware.
1990's	FFI starts to pioneer European hardware (German and Italian) into North America. Reputation develops for leading-edge market introductions in multipoints, lift slide, bifold hardware, track systems, and more.
2000's	Inspired by customer feedback, FFI rethinks and redesigns European hardware for North American market needs. With new proprietary FFI Design Products, FFI expands its market from North America to worldwide.
2005	FFI partners with 3G Technologies (Korea) for a proprietary stainless steel lift slide system.
2017	The automation division grew steadily in sales and offerings until becoming its own corporation: Automated Fenestration Inc (AFI).
2019	FFI ends distribution of Amesbury Truth hardware, to better focus on our core business of manufacturer clients.
2022	FFI has grown every year, and continues to develop high quality, innovative products.
2022	VBH(GB) appoints FFI their exclusive North American distributor for greenteQ hardware
2023	FFI introduces stainless steel concealed hinges from Weider Metal Australia

Questions? We can handle it.

Faster reliable support. Let us show you how.

- We make it easy - CAD drawings, bill of materials, and more.
- Samples for certification testing and other development needs.
- In-stock components ready to ship for your just-in-time needs.
- Need a product you don't see here? FFI can source or produce OEM products.



**Functional Fenestration Inc.**  
Hawthorne, CA  
[www.fenestration.net](http://www.fenestration.net)  
[sales@fenestration.net](mailto:sales@fenestration.net)  
Toll-Free (800) 677-0228